

WANTED

Dead, not Alive

Purple Loosestrife

- Invades wetlands and roadside ditches
- Produces 2.5 million seeds annually, regrowth occurs if plant is cut
- Monotypic stands prevent native plants from growing

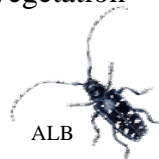


Japanese Knotweed

- Invades riparian areas and roadsides
- Forms dense, large stands that outcompete native vegetation
- Rhizomes spread 60ft in the soil
- Reproduces by seeds and vegetative growth

Don't Move Firewood

- When enjoying the outdoors, don't pack firewood. Invasive insects such as the Asian Longhorned Beetle (ALB), the Emerald Ash Borer (EAB), and the Sirex Woodwasp (SW) hitch hike to new areas via firewood and decimate forest ecosystems
- SW was confirmed in Piseco, and attacks living pine trees
- Save our trees from infestation by purchasing wood from local sellers less than 50 miles away, or buying wood at campgrounds



ALB



EAB



SW

Eurasian Watermilfoil



- Aquatic invasive plant that is established in Fifth, Sixth, Seventh Lakes and Lake Algonquin
- Forms a mat on water surface
- Dense populations prevent light from reaching native plants
- Easily spread by broken fragments

Spiny Waterflea

- Aquatic invasive crustaceans hatch, grow, and mate within 2 weeks
- Currently established in the Great Sacandaga Lake
- Threatens fish populations by depleting their food source (zooplankton)
- Tail spines hook to fishing gear; remove all animals and plants from your gear, boat, and trailer before leaving access



Fleas on line

© Jeff Gunderson



White Nose Syndrome



Fungus on muzzle

- The Geomyces fungus may be linked to severe bat mortality in New York
- Live bats are dehydrated, dead or dying bats are emaciated from a loss of fat reserves
- 80-100% bat mortality has occurred in some caves
- White fungus grows on head, body, and wings, bats fly outside during the winter in daylight hours
- Bats consume copious amounts of insects during the summer, and their absence could alter the Adirondack ecosystem, and make sitting outside miserable for humans

Volunteers needed!
Invasive Insect
Trapping Program

Adirondack Park
Invasive Species
Awareness Week
July 5-11, 2009