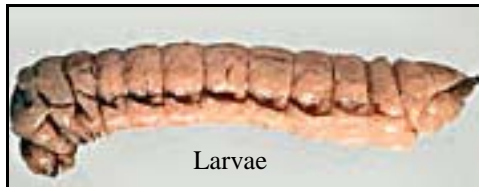


# Sirex Woodwasp

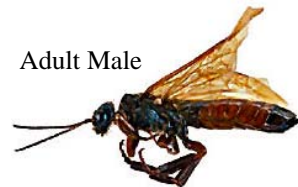
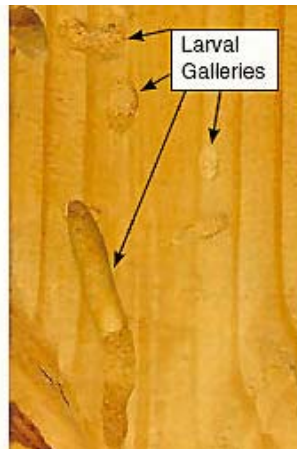
## Biology

- Invasive insect native to Eurasia and north Africa
- Larvae are creamy white with spine at rear of abdomen
- Adults are 1 - 1.5 inches long
- Spear-shaped plate at end of abdomen
- Females have a dark metallic blue black body and orange legs
- Males have an orange stripe on abdomen and black hind legs



## Symptoms

- Wilted foliage of pines
- Resin beads at egg-laying sites
- Larval galleries packed with sawdust
- Round exit holes where adults emerge



## Problems

- Confirmed in the Town of Arietta
- Attacks living pines
- Females inject a symbiotic fungus, mucus, and eggs into tree
- Fungus and mucus kill tree, allowing larvae to develop
- Females lay 25-450 eggs
- Deep bore galleries harm trees



## What YOU can do

- Inspect trees for symptoms
- Report sightings with exact location to NYS DEC Region 5 Office at 518-897-1211 or to the Adirondack Park Invasive Plant Program at 518-576-2082