

Hemlock Woolly Adelgid

Biology

- Aphid-like insect native to Asia
- 1/16 inch long
- Adults are dark reddish-brown to purplish-black in color
- Adults produce wool-like wax filaments (ovisacs) that contain eggs

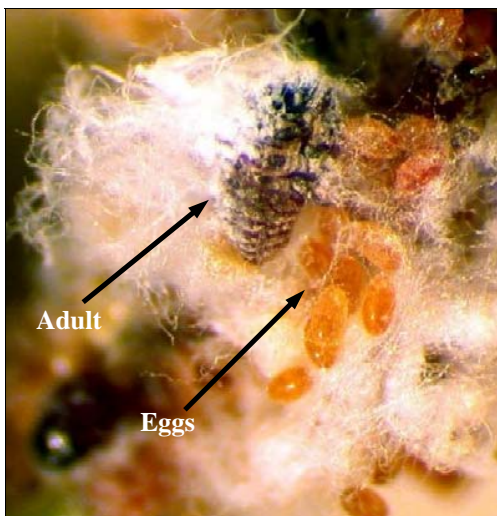


Problems

- Sap and nutrients from hemlock foliage are consumed, preventing tree growth
- HWA saliva is toxic to trees
- Egg sacs may contain 300 eggs
- Tree death occurs in 4-10 years
- Spread by wind, birds, animals, and humans

Symptoms

- Ovisacs rub off on branches, foliage, and bark
- Trees with gray green needles
- Defoliation
- Twig dieback



What YOU can do

- Move bird feeders away from hemlocks
- Remove isolated, infested trees from a woodlot
- Make sure nursery stock is not infested
- Report sightings to New York Cooperative Agricultural Pest Survey at 1-800-554-4501, ext. 72087