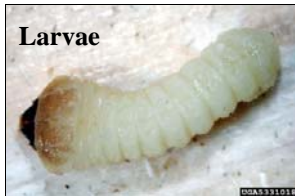


Brown Spruce Longhorned Beetle

Biology

- Invasive beetle native to Europe
- Adults are flattened, brown abdomen, black to dark brown head covered with light hairs
- Reddish-brown antennae 1/2 length of body
- 2 or 3 stripes appear on wing covers



Problems

- Attacks Spruce
- Damages healthy trees
- Larvae burrow into the cambium and phloem, disrupting the flow of nutrients throughout the tree
- Girdling completely cuts off flow of nutrients and kills the tree
- Established in Nova Scotia

Symptoms

- Oval to round exit holes in bark
- Resin oozes from tree
- Frass (sawdust-like feces) at base of tree
- Frass packed into holes and galleries
- L-shaped galleries
- Yellow or brown crown
- Loss of needles



What YOU can do

- Don't move firewood. BSLB is transported to new locations via wood. Save our trees from infestation by purchasing wood from local sellers less than 50 miles away, or buying wood at campgrounds
- Inspect trees for symptoms
- Report sightings to New York Cooperative Agricultural Pest Survey at 1-800-554-4501, ext. 72087