



The Conservation Corner

December 2008



Hamilton County Soil & Water Conservation District
PO Box 166, Route 8
Lake Pleasant NY 12108
Phone: 518-548-3991 Email: hcsxcd@frontiernet.net
Website: www.hamiltoncountysxcd.com
Hamilton County Online Mapping System: www.hamcomaps.net

A publication developed to highlight conservation efforts, programs and events throughout Hamilton County
Authored by Conservation Educator
Caitlin Stewart
December 2008

New Invaders are on the Loose!

A number of new invasive species are knocking on Hamilton County's door, but don't let them in!

The **Spiny Water Flea** is an aquatic invasive crustacean that has been confirmed in the Great Sacandaga Lake. At 1/4—5/8 inches long, it hatches, grows, and mates within 2 weeks, and lays eggs that remain viable for years.



Spiny Water Flea

Fish populations are threatened because the waterflea decimates zooplankton populations, a main food



Fleas on fishing gear

is native to Eurasia and has

source for fish. It also fouls fishing gear and inhibits fish from being landed. The **Sirex Woodwasp**

been confirmed in the Town of Arietta (Piseco). Females attack living pines and inject a symbiotic fungus, mucus, and eggs into the tree. The fungus and mucus kill the tree, allowing larvae to develop. Symptoms of



Sirex Woodwasp

infested trees include wilted foliage, resin beads at egg-laying sites, larval galleries packed with sawdust, and round exit holes in bark where adults emerge.

Don't Move Firewood!

Invasive pests such as the Asian longhorned beetle (ALB) and the emerald ash borer (EAB) are often transported to new



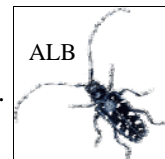
Resin beads

areas via firewood. These insects decimate ecosystems. Save our trees from



EAB

infestation by leaving firewood at home, purchasing firewood from local sellers less than 50 miles away, or buying wood at campgrounds. Report sightings to the



ALB

Adirondack Park Invasive Plant Program (www.adkinvasives.com). For fact sheets or to schedule a presentation for your organization, contact our office.

Want a map? In need of a query? Call Del! GIS Resource Center: 518-548-3991



Many people are interested in simple ways they can make a sustainable difference for a healthier environment. Here are some ideas on how *YOU* can go green this holiday season.

1. Purchase LED lights.
2. Bring reusable bags when grocery or gift shopping - they are sturdier than paper or plastic and won't clog landfills or endanger wildlife.
3. Use reusable instead of disposable coffee filters.
4. Buy local produce and organics for holiday meals. Not only are you supporting our farmers, but your recipes will be more healthy!
5. Send greeting cards via email.
6. Make your own wrapping paper from newspaper or magazines. Fabrics make an excellent, reusable wrapping product. Reuse paper, boxes, bags, tags, and bows.
7. Purchase gifts from local artists.
8. Monitor oven use and be aware of how long the refrigerator door is left open. These are simple ways to decrease energy consumption and cut your bills.
9. Avoid using disposable dinnerware when entertaining.
10. Donate, reuse, or recycle



- old toys and electronics.
11. When shopping, try to make all stops in one trip, carpool, or use public transportation to decrease carbon emissions.
12. Give handmade gifts instead of purchased items such as quilts, baked goods, a family recipe book, candles, paper, or soap.
13. Purchase a live tree that can be replanted.
14. Burn bees, vegetable, or soy wax candles.
15. Make your own decorations and cards from recycled and natural materials. Pomegranates, gourds, pinecones, evergreen branches, and nuts make beautiful, biodegradable/edible decorations. Native seedlings and potted evergreens are decorations you can plant in the spring.
16. Clay ornaments: Instead of plastic ornaments, make these wonderful clay decorations. Recipe: 6 C flour, 3 C salt, 3 C water. Combine ingredients in bowl. Knead on floured surface for 10 minutes (play dough consistency). Roll and cut dough with cookie cutters. Poke holes for hanging. Bake at 325⁰F for 90 minutes. Cool and decorate!

Coming Soon!
Tree and Shrub Sale
Contact the HCSWCD
for more details.

Conservation Presentations

Conservation education is an increasingly important subject for today's students, allowing them to understand how natural systems function, the political, social, and cultural components of our environment, and the reciprocity that exists between human/nature interactions. It is also important for adults to understand the complex processes of our Adirondack ecosystem so that they may be good environmental stewards.



Stream biomonitoring with benthic macroinvertebrates

Past presentations

- Invasive species including display board, specimens, PowerPoint presentation, and brochures.
- Watersheds, including an EnviroScape Model, PowerPoint presentation, and class handout.
- Stream biomonitoring using benthic macroinvertebrates including PowerPoint presentation, taxonomic keys, specimens, class handouts, and outdoor lab.
- Tree identification including PowerPoint presentation, class handouts, and outdoor lab.

Presentations are available for the Hamilton County community, including students, teachers, and citizens. Call the office to schedule a presentation or lab!